



INSPECTIONS

From visual mechanical or structural inspections to electrical evaluations, Heyl & Patterson's qualified inspections team can help keep your equipment functioning effectively.



Grab Bucket Unloader

No one likes a breakdown. With more than 120 years of experience we know you can't afford costly downtime, reduced production, or a complete equipment replacement. That's why we offer a comprehensive inspection program that helps to monitor and maintain your equipment. We will review previous inspections and document current conditions of components that need adjustment, maintenance, monitoring or replacement.

We follow a four-part process for all of our inspections:

1. A review of your previous inspection history. A review of your current maintenance program and discussion of the recommended spares in your inventory including problems and concerns you may have.



Vintage photo from our archive.

OUR INSPECTIONS HELP TO:

- Avoid unexpected downtime.
- Document annually the operational status of your equipment.
- Identify and evaluate common wear spots.
- Support and reinforce your maintenance program.
- Help with your annual maintenance budgeting.

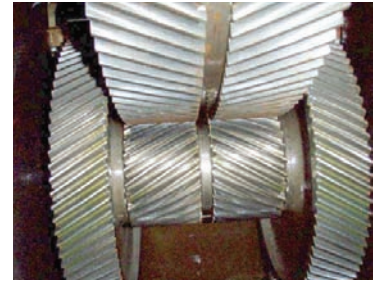


2. An in-depth visual inspection on mechanical components and structural integrity, with emphasis on critical adjustments and key components. We also offer a more in depth structural inspection when needed. If desired we can perform an Engineering Study after the inspection to determine upgrade options available. An electrical inspection and evaluation is also available.
3. Observation of the equipment under normal operating conditions. By observing actual operating conditions we can pinpoint issues that a non-operating inspection cannot detect. This is a good time to identify specific issues you may have experienced which can be tuned up.
4. At the end of our visit a hand-written report that outlines the inspection observations is discussed onsite identifying areas of concern. Afterward, you will receive a formal report that clearly and concisely explains what was inspected, the problems found, and recommendations to correct those problems. A list of required parts will also be included, if necessary. This report is prepared for your permanent file and can be compared to previous reports to identify areas of concern.

If necessary, a complete engineering study can be performed after the inspection. The engineering study will compare current operating realities to the original design basis of the equipment. This engineering study defines the equipment capabilities and paths for upgrades.

We recommend an annual inspection of your equipment to maintain it and avoid costly unexpected downtime. Annual inspections allow you to recognize wear items that should be monitored and plan replacements into your budgeting process.

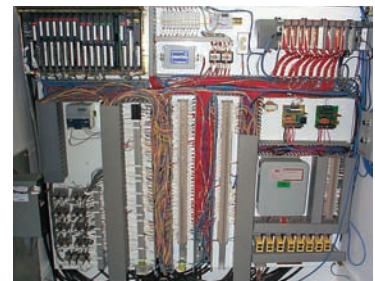
At Heyl & Patterson we've been pioneering solutions for industry since 1887—let us go to work for you. Go with a name you trust, a name with experience. For further information view our website at www.heylpatterson.com or call today!



Visual inspection of gears and reducers.



Observation of operations.



Electrical control.



Dumper inspection.